



COMPANY PROFILE

LUMUT NAVAL SHIPYARD

Defining Excellence



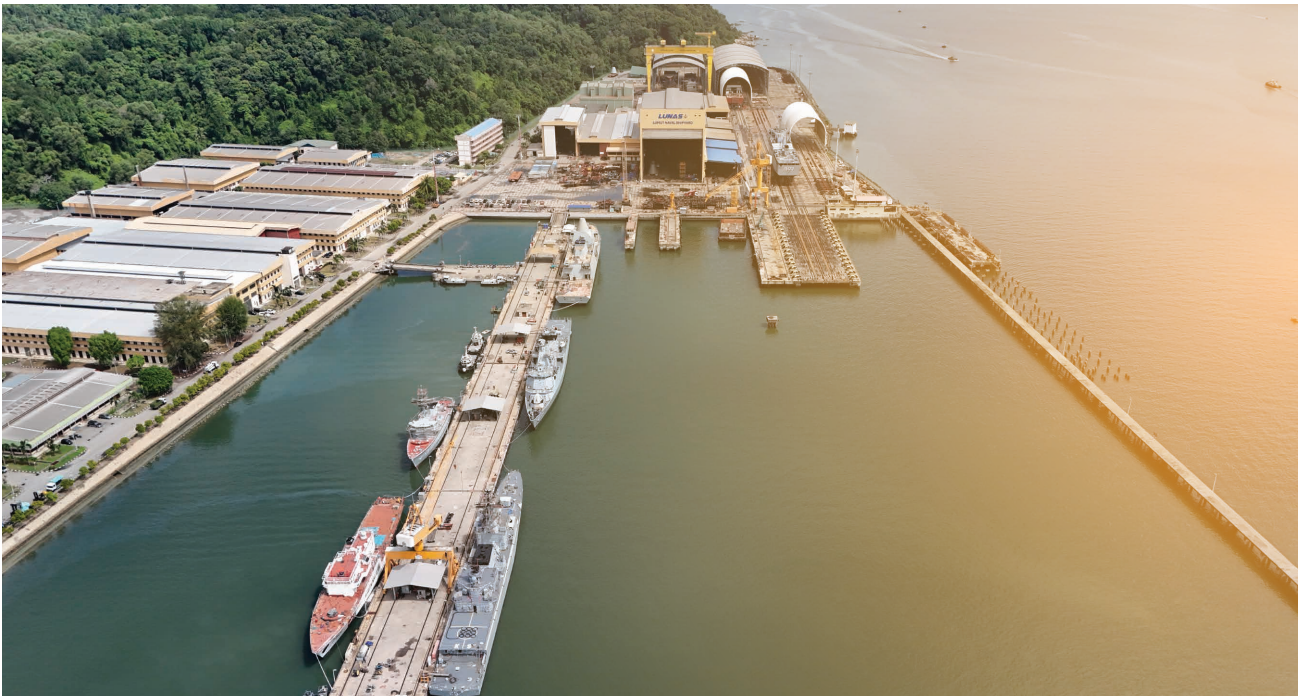
GOV MEDIA
AWARDS 2025



TABLE OF CONTENT

Overview	01
Vision, Mission & Core Values	02
Services and Locations	03
Commitment to Safety & Environmental Compliance	04
Corporate Social Responsibility	05
Facilities	08
Projects	10
Achievements	13
Commercial	16
Other Businesses	22
Licenses	25
Awards & Accolades	32



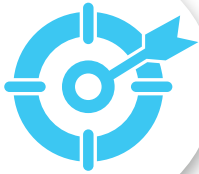


OVERVIEW

Lumut Naval Shipyard Sdn. Bhd. (LUNAS) stands as a pillar of the maritime industry, recognized for its extensive capabilities in shipbuilding and shiprepair, and maintenance services since its establishment in 1984. As a subsidiary under the stewardship of the Ministry of Finance (MoF), LUNAS is dedicated to upholding excellence and fostering innovation across all facets of its operations.

Over the decades, LUNAS has strengthened its position through strategic partnerships, reinforcing its pivotal role in bolstering national security through the construction of naval vessels and enhancing maritime services capabilities. The company has significantly contributed to the advancement of Malaysia's maritime and defense sectors, exemplified by initiatives such as the Vendor Development Programme (VDP), which enhances the skills of local vendors and promotes workforce development. In addition to its core operation, LUNAS oversees essential divisions such as LUNAS Langkawi Sdn. Bhd., and LUNAS Shiprepair Sdn. Bhd., each distinguished for their precision and reliability further expand our capabilities and provide comprehensive solutions in shipbuilding and shiprepair.

LUNAS demonstrates its commitment to innovation through the adoption of cutting-edge technologies and integrating advanced shipbuilding techniques and eco-friendly initiatives. Moreover, LUNAS prioritizes the development of a skilled workforce, through transferring of knowledge with global partners. This dedication allows LUNAS to maintain leadership in technological advancements, meeting evolving global maritime demands while upholding standards of excellence in quality, integrity and national security.



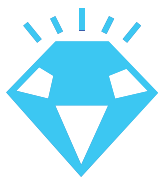
OUR MISSION

Trusted partner for delivering innovative solutions



OUR VISION

Committed to quality, driven by results, focus on creating lasting value for stakeholders



OUR CORE VALUES

- RELIABILITY
- COMMITMENT
- INTEGRITY
- PEOPLE-CENTRIC

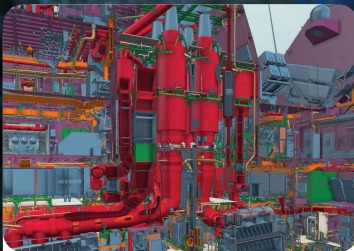
SERVICES



SHIPBUILDING



SHIP REPAIR



ENGINEERING



**COMBAT SYSTEM
CENTRIC**

LOCATIONS

LUNAS operates from three strategic locations to ensure efficient management and operations. The corporate office is situated at MoF Inc Tower in Platinum Park. Meanwhile, the heart of LUNAS' operations lies at the Lumut Shipyard in the Naval Base, Lumut, focusing on shipbuilding and ship repair activities.

One of its subsidiaries, LUNAS Langkawi Shipyard, is located at Bukit Malut, Langkawi, Kedah, and expands the company's operational reach in the northern region.



Peninsular Malaysia

LUNAS CORPORATE OFFICE

33-1, Level 33,
MOF Inc Tower, 9 Persiaran KLCC,
50088 Kuala Lumpur
(+603) 2181 8104 / (+603) 2181 6954

LUMUT NAVAL SHIPYARD

Naval Base,
32100 Lumut,
Perak Darul Ridzuan
(+605) 690 7000

LUNAS LANGKAWI SHIPYARD

Bukit Malut, Mukim Kedawang,
07000, Langkawi,
Kedah Darul Aman
(+604) 966 5555

COMMITMENT TO SAFETY & ENVIRONMENTAL COMPLIANCE

At LUNAS, we are committed to upholding the highest standards of workplace safety and environmental responsibility in compliance with DOSH and DOE regulations.

Our Health, Safety & Environment (HSE) Management System ensures strict adherence to ISO 45001:2018, reducing workplace risks and promoting a strong safety culture.



We implement a structured Permit to Work (PTW) System for high-risk activities, including hot works, working at height, lifting operations, and confined space entry, ensuring that all tasks are conducted safely and efficiently. Our Confined Space Management Program includes hazard assessments, atmospheric monitoring, and Authorized Gas Tester (AGT) certification for qualified personnel.

On the environmental front, we comply with DOE Scheduled Waste Regulations, ensuring proper waste segregation, handling, and disposal in line with regulatory requirements. Regular environmental monitoring and inspections are conducted to minimize our ecological footprint and maintain compliance with national standards.

Through these initiatives, LUNAS remains dedicated to a safe workplace and a sustainable environment, protecting both our people and the surroundings in which we operate.



CORPORATE SOCIAL RESPONSIBILITY

LUNAS places a strong emphasis on Corporate Social Responsibility (CSR), aiming to make a meaningful impact beyond its core operations in the maritime industry. We are deeply committed in making a positive impact on the community, environment, and our stakeholders through a variety of meaningful initiatives. Our efforts span over human capital development, community engagement, and corporate philanthropy.

HUMAN CAPITAL DEVELOPMENT

LUNAS demonstrates its commitment to human capital development through strategic monetary investments in educational support and skills enhancement initiatives tailored for students and young engineers. Students are given the firsthand exposure to real-world industrial processes, technologies, and operations. Furthermore, LUNAS enhances practical learning through internships and PROTEGE programs furnishing participants with invaluable hands-on experience and industry insights. This initiative bridges academic knowledge with real-world applications, equipping individuals with relevant skills and enhancing their employability. Additionally, it helps build professional networks, receive mentorship, and prepares future generations to be more competitive in the job market.

LUNAS's investments in human capital development not only strengthen its CSR footprint but also empower individuals with the knowledge and skills essential for personal and professional growth. These initiatives underscores LUNAS's dedication for fostering a capable workforce and contributing positively to community growth and development.



COMMUNITY ENGAGEMENTS



LUNAS is dedicated to enhancing the well-being of local communities and fostering inclusivity within its workforce. Through vibrant cultural celebrations and engagements, LUNAS strengthens community bonds and celebrates the rich diversity of the region. These initiatives not only enrich local culture but also reflect a commitment to nurturing a sense of belonging among valued staff. Inclusivity is fundamental to LUNAS's principles and it prioritizes creating a workplace where every team member feels valued and empowered.

Furthermore, LUNAS actively supports programs such as *Iftar* with the Royal Malaysian Navy (RMN) LCS project team and *Majlis Kenduri Kesyukuran*. These type of engagements strengthen community cohesion and promote unity, underscoring the role as a responsible corporate citizen. By championing inclusivity, supporting local communities, and fostering a positive workplace culture, LUNAS exemplifies its core values of compassion and community stewardship.



CORPORATE PHILANTHROPY



LUNAS is deeply committed to corporate philanthropy, supporting educational institutions and community programs while providing resources to various organizations. The company also contributes monetary assistance to enhance educational resources and opportunities at institutions such as the Science Technology Institute and schools. Additionally, LUNAS supports the Royal Malaysian Navy (RMN) by contributing to the successful organization of events like *Hari Angkatan Tentera Malaysia* (ATM) 2023. Furthering its commitment to community well-being, LUNAS support healthcare initiatives, including collaborative blood donation programs with Manjung General Hospital. These efforts underscore LUNAS's dedication to public health and welfare.

Moreover, LUNAS donates Wi-Fi, printers, and folding bicycles to the RMN, enhancing their operational capabilities. The company also contributes used garnet to Universiti Tun Hussein Onn Malaysia (UTHM) for

research purposes, supporting academic and scientific advancement. Additionally, LUNAS donates ship models, such as the classic ship model Nurshah Muar and the SRI TIGA-class Fast Troop Vessel (FTV) model, to organizations like the Association of Marine Industries of Malaysia (AMIM) and RMN to promote maritime heritage and education.

LUNAS's comprehensive CSR initiatives encompass human capital development, community engagement, and corporate philanthropy, reflecting our commitment to corporate citizenship and sustainable development. By fostering a positive impact on society and the environment, LUNAS strives to build a brighter future for all.

FACILITIES

SHIPLIFT

SPECIFICATION	120 meters length x 23 meters breadth x 9 meter depth
CAPACITY/TYPE	4,500 tonne Synchrolift

GPS COORDINATE

4.235085, 100.609186

BUILDING BERTH

SPECIFICATION	<ul style="list-style-type: none"> • On rail, 8 big ships • Five locations of hardstand at 31,059 sqm • 8 x Big Tops (Height 29 m, area 2,500 sqm) • Hangar Loc 25 (Height 34.5 m, area 2,500 sqm) • Hangar Loc 31 (Height 10.3 m, area 2,400 sqm) • Hangar Loc 35 (Height 9 m, area 7,200 sqm) • Hangar Loc 77 (Height 32 m, area 7,500 sqm) • Hangar Loc 78 (Height 32 m, area 4,500 sqm) • Jetty : 900-meter ship's berth for afloat works, 7 ships
CAPACITY/TYPE	<p>Jetty</p> <ul style="list-style-type: none"> • Floating jetty with quayside cranage Berthing • Berthing facility with reticulated seawater, fresh water and • Electrical supply of 440V and 415V <p>Ship Transfer System</p> <ul style="list-style-type: none"> • Rail bound transfer system with parking length of 1,000 meter <p>Lifting Capacity</p> <ul style="list-style-type: none"> • Two 300 tonne Elevating Trucks • Shunting carriage • 300T Rubber Tyred Gantry Crane • 280T Crawler Crane • 50T & 70T Mobile Crane • 5T,10T & 40T Quay Side Luffing Crane

QUAY / WHARF / BERTH / WATERFRONT

SPECIFICATION

A total of 900-meter ship's berth for float works:
 Floating berth (Pontoon)
 • Outer (7 m water depth x 400 m)
 • Inner (5 m water depth x 300 m)
 Static Berth - Quay 1 (10 m water depth x 200 m)

Other Facilities & Equipment

SPECIFICATION

- One stop centre SBSR & Defence workshop
- Tugboat Services (10T Bollard Pull)
- Blasting & Painting Chamber
- Sonar Pit
- Alternator Bench Test
- Load Bank Test

KEY SERVICES

Shipbuilding and Ship repair

TOTAL YARD AREA

46 hectares or 460 000 sqm

KEY PRODUCT

Construction of naval and commercial ships, MRO of naval and commercial ships (SLEP, REFIT, ERDL, DED, Slipping), Conversion, Modification, Equipment/System Upgrade & Integration, Engineering Design & Technical Services (inhouse design work from conceptual to detailed design using cutting edge design software AVEVA Marine, AVEVA MARS and AutoCad, Class Management, Offshore Fabrication, Integration Logistic Support (ILS) packages, Tugboat Services and other fabrications work.

PROJECTS

Current Project
Future Project



CURRENT PROJECT

Littoral Combat Ship (LCS)

The Littoral Combat Ship (LCS) is built based on the design of the Gowind 2500 corvette developed by the Naval Group. The MAHARAJA LELA-class frigate is the most advanced ship of the Royal Malaysian Navy (RMN) designed for four-dimensional maritime operations.

- Can accommodate 138 people onboard.
- Maximum speed of 28 knots with a total range of 5,000 nautical miles and an endurance of 21 days at sea.
- The ship boasts an array of sensors and processing systems. The Naval Group SETIS combat system forms the backbone of its combat capabilities, complimented by the Thales SMART-S Mk2 search radar, Rheinmetall TMEQ Mk2 fire control radar, and the Thales towed array sonar which enhance its situational awareness and anti-submarine warfare capabilities.
- A CODAD propulsion system, consisting of four MTU 20V 1163 TB93 engines, provides a total output of 29,600kW.
- With a displacement of 3,100 tons and a length of 111 meters, the frigate combines versatility and power.
- Equipped with a Bofors 57 mm Mk3 gun and two MSI DS30M 30 mm cannons for surface engagements.
- Carries 16 VL MICA surface-to-air missiles for air defence, eight Naval Strike Missiles for anti-ship operations, and two triple SEA torpedo launcher for anti-submarine warfare. The vessel can accommodate various type of UAVs and helicopters, weighing up to 10 tons, in its stern hangar and helicopter landing platform.



FUTURE PROJECT

New Generation Patrol Vessel Batch 2 / Littoral Mission Ship Batch 3

The second batch of our New Generation Patrol Vessel (2nd NGPV) consists of building 6 vessels specifically designed to:

Enhance Local Expertise

The NGPV program foster advancements in domestic naval shipbuilding design, engineering, and construction capabilities.

Maximize Local Content

LUNAS prioritizes using locally-sourced materials and technical support services wherever possible.

Building on a Proven Platform

The NGPV utilizes the well-established MEKO 100 hull design, ensuring reliability and performance. LUNAS incorporated upgrades, including more durable machinery and equipment, to increase vessel endurance.

Synergy and Collaboration

The NGPV program leverages the recently acquired ship construction facilities used for the LCS program, maximizing efficiency.

LUNAS collaborates with local design firms and research institutions for a comprehensive review of the ship design, incorporating expertise in specialized military applications.

PRINCIPAL DIMENSIONS

Length Overall	91.10 m
Length DWL	82.80 m
Beam on 1st Deck (MAX)	12.85 m
Beam DWL	11.80 m
Depth to 1st Deck	6.80 m
Design Draught Hull Approx.	3.40 m
Displacement Full Load Approx.	1,852 tonnes
Speed	22 knots
Endurance	21 days
Range at Economical Speed	5000 nM
Complement	76 plus 14 persons
Propulsion Power	2 x Main Engines 10,900 kW
Electrical Power	3 x Generator Set 1,500 kVA
Medium Range Gun	57 mm
All Range Gun	30 mm

ACHIEVEMENTS

ACHIEVEMENTS

2 UNITS SRI TIGA-CLASS FAST TROOP VESSEL (FTV)



The SRI TIGA-class fast troop vessels (FTV) comprise two units named after an island in Sabah. Each vessel is 38 meters long and displaces 117 tons. Constructed from aluminum, these ships are lighter than those made of steel but more secure than fiberglass, requiring minimal maintenance. Their small crew allows for additional space to carry troops. Powered by four waterjets and four engines, the SRI TIGA-class vessels can reach speeds of 25-28 knots, which is high for military troop transport ships of this size. Each ship is 38 meters in length, 7.2 meters in width, and can carry 32 fully armed troops and equipment over distances exceeding 1,000 kilometers at a cruising speed of 14 knots.

For self-defense, these ships are equipped with a 20mm cannon. Additional weaponry, such as grenade launchers and anti-tank guided missiles, can be added. The modular design of the SRI TIGA-class vessels allows them to serve multiple purposes, including fast attack, fast troop transport, light logistics, general cargo, marine ambulance, diving platforms, and patrol.

4 UNITS KERIS-CLASS LITTORAL MISSION SHIP (LMS)



The KERIS-class Littoral Mission Ships (LMS) comprise four units in the RMN. These large patrol vessels are 69 meters (226 feet 5 inches) long and displace 700 tons. An enlarged and improved version of the Durjoy-class patrol craft of the Bangladesh Navy, the KERIS-class ships are armed solely with guns, as specified by the RMN. Capable of carrying up to three standard ISO containers, these ships support missions including anti-surface warfare, mine warfare, hydrography, and Intelligence, Surveillance, and Reconnaissance (ISR) duties.

6 UNITS KEDAH-CLASS NEW GENERATION PATROL VESSEL (NGPV)



The KEDAH-class vessels feature stealth designs to minimize radar cross-section. Although their size and tonnage suggest they are corvettes, the RMN classifies them as offshore patrol vessels (OPVs), a category typically associated with law enforcement or coast guard duties rather than naval warfare. This classification is due to the ships being delivered without certain weapon systems, although they are equipped with the necessary provisions, sensors, and electronics for future installation. Currently, these vessels are armed solely with a 76 mm gun on the bow and a 30 mm gun on the aft, making them lightly armed and relatively vulnerable for ships of their size. The KEDAH-class vessels are 91.10 meters in length, with a beam of 12.85 meters and a draft of 3.40 meters. They have a standard displacement of 1,300 tons and a full load displacement of 1,650 tons.

SERVICE LIFE EXTENSION PROGRAMME (SLEP) OF KASTURI-CLASS CORVETTE



The KASTURI-class corvettes, KD KASTURI and KD LEKIR, are two ships of the Royal Malaysian Navy, forming the 22nd Corvette Squadron based in Lumut. Acquired in the mid-1980s, these ships underwent a Service Life Extension Program (SLEP) starting in 2009, enabling another 10 to 15 years of service. They have since returned to active duty. Named after the heroic figures Hang Kasturi and Hang Lekir from the 15th-century Malay epic Hikayat Hang Tuah, they share this naming tradition with the LEKIU-class frigates KD LEKIU and KD JEBAT, and the frigate-turned-training ship KD HANG TUAH.

COMMERCIAL

Shipbuilding
Shiprepair

COMMERCIAL SHIPBUILDING



2002

2 IN NOS PULAU PINANG FERRIES

LUNAS constructed two new Penang Island ferries in 2002. These ferries are designed to replace the iconic old ferries and are specifically for pedestrians, motorcycles, and bicycles, as they do not accommodate cars. This modernization effort aims to enhance ferry service between Butterworth on the mainland and Georgetown on Penang Island, improving connectivity and efficiency for daily commuters and tourists. The new ferries represent a significant upgrade, contributing to the region's infrastructure development and providing a reliable mode of transportation.



2006

60M OFFSHORE SUPPORT VESSEL MV TASNEEM 2

The MV TASNEEM 2, commissioned in 2006 stands out as a versatile offshore support vessel with a length of approximately 60 meters and a gross tonnage ranging between 1,000 to 1,500 tons. Powered by diesel engines and equipped with azimuth thrusters, it ensures efficient propulsion and maneuverability. Designed to support offshore operations, the vessel boasts accommodations for crew and support personnel, along with essential amenities. It is outfitted with advanced features including dynamic positioning systems (DP) for precise station-keeping, heavy-duty cranes for cargo handling, and other specialized equipment tailored to facilitate supply runs, crew transfers, and maintenance operations essential for offshore platforms. The MV Tasneem 2 exemplifies reliability and capability in navigating challenging marine environments, crucial for supporting various offshore industries globally.


2008

60M ANCHOR HANDLING TUG MV TANJUNG SARI

The MV TANJUNG SARI, a 60-meter anchor handling tug, is designed specifically for demanding maritime operations, particularly anchor handling duties. It features robust capabilities, including a powerful 5,220 BHP engine, advanced towing equipment such as winches and hydraulic systems, and offers 240 square meters of clear deck space. With accommodations for up to 30 crew members, the vessel ensures operational efficiency and safety during extended offshore missions. Equipped with Dynamic Positioning (DP) technology and FIFI 1 fire-fighting capabilities, the MV Tanjung

Sari exemplifies reliability and strength in supporting offshore oil and gas exploration, construction, and maintenance projects globally.


2009

60.8M WELL TEST SERVICING VESSEL TANJUNG GELANG

MV TANJUNG GELANG, a 60.8-meter well test servicing vessel built by LUNAS in 2009, plays a pivotal role in offshore oil and gas operations. Specifically designed for conducting well tests, it is equipped with advanced testing equipment and facilities tailored for offshore environments. The vessel supports the oil and gas industry by efficiently assessing the productivity and characteristics of reservoirs, utilizing state-of-the-art technology to ensure precise data collection and analysis during operations.



2010

141M YACHT HOTEL SUNBORN III

The SUNBORN III, a luxurious 141-meter yacht hotel developed in 2010 through a partnership between Sunborn Group and LUNAS, represents excellence in maritime hospitality. Constructed in Malaysia, this lavish yacht boasts 189 rooms distributed across seven floors, encompassing a total floor area of 15,500 square meters (approximately 167,000 square feet). Designed to cater to the perceptive tastes of global travelers, it represents a significant investment endeavor, aiming to secure 120 million euros (\$156 million) from prospective investors.

COMMERCIAL SHIPREPAIR

LUNAS is also recognized for its expertise in comprehensive ship repair and maintenance services. Specializing in both commercial and luxury vessel sectors, LUNAS ensures vessels are maintained at optimal operational standards through meticulous attention to detail and adherence to strict safety protocols.

MY CALISTO

One notable project handled by LUNAS includes the maintenance of luxury yachts like MY CALISTO. For vessels of this caliber, the focus lies not only on structural integrity but also on enhancing onboard systems to meet the exacting standards of luxury maritime travel. The team at LUNAS applies their expertise to preserve the vessel's pristine condition and ensure it meets the expectations of its selective owners and guests.



NAUTICA TANJUNG PUTERI 2

LUNAS also has successfully serviced vessels such as the NAUTICA TANJUNG PUTERI 2. This involves a wide range of tasks from mechanical overhauls to electrical system upgrades, all aimed at enhancing operational efficiency and extending the vessel's service life. The company's commitment to quality and reliability makes it a preferred choice for shipowners looking to maintain their fleet's performance and compliance with regulatory requirements.



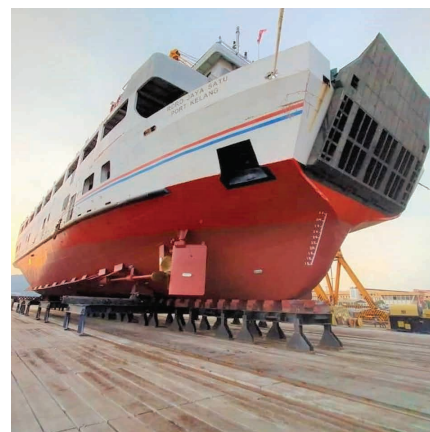
CONVERSION AND MODIFICATION WORKS FOR JAVA IRDINA

LUNAS also excels in conversion and modification projects, exemplified by their work on vessels like JAVA IRDINA. These projects often involve transforming vessels to serve new roles or upgrading them with advanced technologies. Such modifications not only improve vessel performance but also ensure they remain competitive in the evolving maritime industry landscape.



RORO JAYA SATU

For Roll-on/Roll-off (RORO) vessels like JAYA SATU, LUNAS undertakes critical maintenance tasks to enhance operational readiness. These efforts include thorough inspections, repairs, and safety upgrades essential for efficient cargo handling and passenger transport operations.



GRADE ONE MANJUNG 7

Additionally, LUNAS's capabilities extend to specialized vessels like GRADE ONE MANJUNG 7, where they apply their expertise in handling complex repair and maintenance challenges. By adhering to industry best practices and leveraging technical proficiency, LUNAS ensures that vessels like GRADE ONE MANJUNG 7 remain operational at peak performance levels.



Overall, LUNAS Shipyard stands out for its commitment to excellence, reliability, and innovation in ship repair and maintenance. Through diverse portfolio of projects, including both luxury yachts and commercial vessels, LUNAS continue to uphold reputation as a trusted partner in the maritime industry, providing solutions that meet the unique needs of clients worldwide.

OTHER BUSINESSES

Port Container Crane
Hydraulic Pipe Repair
Pipe Fabrications Works
Tugboat Services

OTHER BUSINESSES

LUNAS renowned for its diverse services, encompasses several critical operations that bolster maritime industries. These include port container crane fabrication, hydraulic pipe repair, pipe fabrication, and tugboat services.



PORT CONTAINER CRANES

The port container cranes fabricated by LUNAS are built to support efficient cargo handling at ports, enhancing the seamless transfer of containers between vessels and shore facilities — a vital component of global trade flows. Characterised by their robust design and advanced handling capabilities, these cranes play a pivotal role in maintaining the fluidity of maritime logistics.



HYDRAULIC PIPE REPAIR

Hydraulic pipe repair services offered by LUNAS are instrumental in maintaining the operational integrity of hydraulic systems crucial for various maritime applications. This service involves the diagnosis, repair, and maintenance of hydraulic pipelines and components, ensuring optimal performance and safety standards are met.



PIPE FABRICATION WORKS

LUNAS's pipe fabrication works specialize in the production and assembly of high-quality pipes tailored for marine environments. These pipes are essential for shipbuilding, offshore platforms, and port infrastructure, demanding precision and durability to withstand rigorous marine conditions.



TUGBOAT SERVICES

Tugboat services provided by LUNAS play a pivotal role in assisting large vessels with navigation and docking maneuvers within harbors and ports. Equipped with powerful engines and specialized equipment, LUNAS's tugboats ensure safe and efficient vessel handling, contributing to operational efficiency and maritime safety.

Collectively, these services at LUNAS underscore its commitment to enhancing maritime operations, bolstering efficiency, safety, and sustainability across the global shipping industry.



LICENSES

ASAL
ORIGINAL

Borang ICA 7 (Pin.1/08)
Form ICA 7 (Rev. 1/08)

KEMENTERIAN PELABURAN,
PERDAGANGAN DAN INDUSTRI
MALAYSIA



MINISTRY OF
INVESTMENT, TRADE AND
INDUSTRY OF MALAYSIA

AKTA PENYELARASAN PERINDUSTRIAN, 1975
LESEN PENGILANG
INDUSTRIAL CO-ORDINATION ACT, 1975
MANUFACTURING LICENCE

No. Siri : **A 042999**
(Serial No) :

No. Lesen : **A 008278**
(Licence No) :

PADA MENURUT AKTA PENYELARASAN PERINDUSTRIAN, 1975
IN PURSUANCE OF THE INDUSTRIAL CO-ORDINATION ACT, 1975

Saya memberi lesen kepada
I licence

LUMUT NAVAL SHIPYARD SDN. BHD.
(Nama pemohon/ Applicant name)

untuk bertindak sebagai PENGILANG BERLESEN mulai dari **18 Februari 1992**
to act as LICENCED MANUFACTURER as from (Tarikh/Date)

ditempat pengilangan beralamat **Pangkalan TLDM, 32100 Lumut, Perak Darul Ridzuan**
at the place of manufacturing at

bagi keluaran yang dinyatakan di bawah ini dan tertakluk kepada syarat yang dilampirkan
bersama ini :
for product(s) specified hereunder and subject to the conditions attached herewith :

Keluaran
Product

**'Boats, barges and patrol vessels; ship building, hull fabrication and ship
repairing; repair, overhaul, machining and production of equipment/
system of ships, boats, barges and patrol vessels; fabrication of steel
structure and parts including offshore structure'**



Digitally signed on 04/10/2024 11:54:37

DATO' HAIRIL YAHRI BIN YAACOB
PEGAWAI PELESEN
LICENCING OFFICER



KEMENTERIAN KEWANGAN MALAYSIA
SIJIL AKUAN PENDAFTARAN SYARIKAT

NO. SIJIL : K11720335074128331
NO. RUJUKAN PENDAFTARAN : 357-00022030
TEMPOH SAH LAKU : 24/03/2025 - 23/04/2028

Bahawa dengan ini diperakui syarikat :

LUMUT NAVAL SHIPYARD SDN. BHD. (199302-K)
PENGKALAN TLDM
MANJUNG
32100 LUMUT
PERAK, MALAYSIA

Telah berdaftar dengan Kementerian Kewangan Malaysia dalam bidang bekalan/ perkhidmatan di bawah sektor, bidang dan sub-bidang seperti di Lampiran A. Kelulusan ini adalah tertakluk kepada syarat-syarat seperti yang dinyatakan di Lampiran B. Individu yang diberi kuasa oleh syarikat bagi urusan perolehan Kerajaan adalah seperti berikut :

ENCIK AZHAN BIN RADIMAN	650406035153	PENGURUS
IR AZHAR BIN JUMAAT	720126065631	KETUA PEGAWAI EKSEKUTIF
IR MUHAMMAD HANIF BIN MUHAMMAD	871228065075	PENGURUS
TUAN SYED AHYATTUDIN BIN SHID IDRIS	781013016023	PENGURUS
ENCIK MOHD NOR FIRDAUS BIN MOHD ADNAN	870909135329	EKSEKUTIF
ENCIK NAZRI BIN SHAFIE	800709086549	PENGURUS

Diluluskan dengan syarat hanya satu syarikat sahaja sama ada syarikat ini atau syarikat:

- 1) TECHNOLOGY DEPOSITORY AGENCY BERHAD (357-02259549)
atau
- 2) MARITIME INSTITUTE OF MALAYSIA (357-0002367107)
atau
- 3) BHIC SUBMARINE ENGINEERING SERVICES SDN. BHD. (357-0002308097)
atau
- 4) LUNAS LANGKAWI SHIPYARD SDN. BHD. (357-02026147)

NOTA:

1. Sekatan Bidang.
2. Mana-mana permohonan pendaftaran yang lain [kemas kini (KU)/ tambah kod bidang (KA)/Bumiputera (KB)] yang menyebabkan pertindihan kod bidang/ penama tidak akan dipertimbangkan.
3. Kelulusan ini hanya terpakai sehingga tempoh sah laku sijil ini SAHAJA.
4. Agensi Kerajaan HENDAKLAH memastikan hanya satu (1) syarikat sahaja yang dibenarkan menyertai pelawaan sebut harga/ tender bagi satu-satu sesuatu perolehan Kerajaan.



KEMENTERIAN KEWANGAN MALAYSIA

SIJIL AKUAN PENDAFTARAN SYARIKAT BUMIPUTERA

NO. SJIL : BP11720335074128331
NO. RUJUKAN PENDAFTARAN : 357-00022030
TEMPOH SAH LAKU : 24/03/2025 - 23/04/2028

Bahawa dengan ini diperakui syarikat :

LUMUT NAVAL SHIPYARD SDN. BHD. (199302-K)
PENGKALAN TLDM
MANJUNG
32100 LUMUT
PERAK, MALAYSIA

Telah diiktiraf sebagai Syarikat Bumiputera oleh Kementerian Kewangan Malaysia. Taraf Bumiputera bukannya hak dan boleh ditarik balik sekiranya syarikat gagal mematuhi syarat/ kriteria yang ditetapkan. Kelulusan ini adalah tertakluk kepada syarat-syarat seperti yang dinyatakan di Sijil Akuan Pendaftaran Syarikat Bumiputera (Lampiran C).

t.t

DATO' INDERA AB RAHIM BIN AB RAHMAN

Perbendaharaan Malaysia Semenanjung
b.p. Ketua Setiausaha Perbendaharaan
Kementerian Kewangan Malaysia

Tarikh Berdaftar Dengan Kementerian Kewangan Malaysia : 24/03/2025

(Sijil ini adalah cetakan komputer dan tidak memerlukan tandatangan)



MAJLIS PERBANDARAN MANJUNG

Manjungku Makmur, Bandar Pelancongan dan Maritim



Jalan Pinang Raja, 32040 Seri Manjung, Perak Darul Ridzuan

Telefon : +(6)05-6898800 / +(6)05-6898891 Faks : +(6)05-6882102 Portal Rasmi : www.mpm.gov.my E-mel : ydp@mpm.gov.my

LEKATKAN
GAMBAR DISINI

BIL LESEN (01/01/2025 - 31/12/2025)

BUTIR-BUTIR PEMEGANG LESEN			
NAMA	: LUMUT NAVAL SHIPYARD SDN. BHD.	NO. AKAUN	: L001094107
NO. K/P	: 199302K	NO. BIL	:
ALAMAT	: NO 33 - 1 LEVEL 33, MOF INC TOWER, NO 9 PERSIARAN KLCC 50088 KUALA LUMPUR, WILAYAH PERSEKUTUAN (KUALA LUMPUR)	KOD LOKASI	:
		NO. RUJ	: 17/185/1
		TARIKH	: 07/02/2025
BUTIR-BUTIR PERNIAGAAN			
ALAMAT	: PANGKALAN TLDM, PANGKALAN TLDM, 32100 PANGKALAN TLDM LUMUT, PERAK DARUL RIDZUAN		

BUTIR-BUTIR BAYARAN	
Tempoh	 L001094107
01/01/2025 - 31/12/2025	 27,450.00
LESEN PEMBINAAN KAPAL (93MP - 186MP)	RM 650.00
LESEN FIRMA PERDAGANGAN/PEJABAT (LEBIH DRPD 93 MP)	RM 530.00
LESEN MEMBUAT/MEMPROSES ALAT ELEKTRONIK DAN ELEKTRIK (>186MP)	RM 1,250.00
LESEN MENYEMBUR CAT & LAIN-LAIN KIMIA (>93MP)	RM 410.00
LESEN BUAT/PROSES BHN-BHN SAINS&KEJURUTERAAN (>186MP)	RM 770.00
LESEN GUDANG/TEMPAT MENYIMPAN BARANG (187 - 280MP)	RM 6,350.00
LESEN LIMBUNGAN KAPAL (KURANG DARIPADA 93MP)	RM 17,490.00
JUMLAH PERLU DIBAYAR	RM 27,450.00
CATATAN :	

YANG DIPERTUA, MAJLIS PERBANDARAN MANJUNG

MAJLIS PERBANDARAN MANJUNG

BIL LESEN (01/01/2025 - 31/12/2025)



L001094107



27,450.00

NAMA	: LUMUT NAVAL SHIPYARD SDN. BHD.	NO. AKAUN	: L001094107
NO. K/P	: 199302K	NO. BIL	:

C E R T I F I C A T E

Management system as per ISO 9001 : 2015

The Certification Body TÜV NORD CERT GmbH hereby confirms as a result of the audit, assessment and certification decision according to ISO/IEC 17021-1:2015, that the organization

LUMUT NAVAL SHIPYARD SDN BHD 199001007732 (199302-K)
Pangkalan TLDM,
32100 Lumut,
Perak Darul Ridzuan,
Malaysia

operates a management system in accordance with the requirements of ISO 9001 : 2015 and will be assessed for conformity within the 3 year term of validity of the certificate.

Scope

Construction of marine vessels

Provision of repair & maintenance service for marine vessels

Contract and project management, including warranty management for the supply, servicing, maintenance and repair of weapon and electronic systems

Certificate Registration No. 44 100 21 92 0011
Audit Report No. SEATH-Q920562/2024

Valid from 2024-03-31
Valid until 2027-03-30
Initial Certification 2018
(Certified by other CB before 2021-03-26)


Certification Body
at TÜV NORD CERT GmbH

TÜV NORD (Thailand) Ltd.
1858/75-76 16th Floor, Interlink Tower,
Debaratna Road, Bangna Tai,
Bangna, Bangkok 10260, Thailand
2024-03-27

TÜV NORD CERT GmbH

Am TÜV 1

45307 Essen

www.tuev-nord-cert.com



MY,SE920562,RC

Certificate of Approval

This is to certify that the Management System of:

Lumut Naval Shipyard Sdn. Bhd.
199001007732 (199302-K)

Pengkalan TLDM, 32100 Lumut, Perak, Malaysia

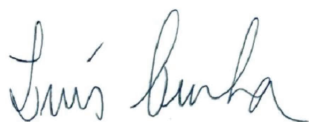
has been approved by LRQA to the following standards:

ISO 45001:2018

Approval Number(s): ISO 45001 – 00011261

The scope of this approval is applicable to:

- (1) Construction of marine vessels up to 5,000 DWT.
- (2) Provision of repair & maintenance service for marine vessels up to 9,000 DWT.
- (3) Contract and project management, including warranty management for the supply, servicing, maintenance and repair of weapon and electronic system.



Luis Cunha

Area Operations Manager - North Asia & SAMEA

Issued by: LRQA Limited





AWARDS & ACCOLADES

Sustainability & CSR Malaysia Awards 2025

PUSHING NEW FRONTIERS FOR
ESG & SUSTAINABILITY



2025

Presented to:

LUMUT NAVAL SHIPYARD SDN BHD GLC OF THE YEAR COMMUNITY & YOUTH EMPOWERMENT AWARD

Presented by:

YB DATUK SERI DR NORAINI BINTI AHMAD

Deputy Minister of Women, Family & Community Development

Dato' R. Rajendran
Chairman

Lee Seng Chee
Co-Chairman

17 July 2025, Kuala Lumpur

Organised by
CSR Malaysia & Pertubuhan Amal Tanggungjawab
Kemapanan Dan Korporat Malaysia



GOVMEDIA AWARDS 2025

**Award for
Malaysia**

**Public-Private Partnership
of the Year - Maritime & Ports**

LUMUT NAVAL SHIPYARD SDN BHD (LUNAS)



Hosted by Publisher Timothy Charlton

GOVMEDIA



Award for

Innovation Award - Engineering

Lumut Naval Shipyard Sdn Bhd (LUNAS)



Hosted by Publisher Tim Charlton

**THE ASIAN
BUSINESS** REVIEW



2024

Presented to:

LUMUT NAVAL SHIPYARD SDN BHD

COMPANY OF THE YEAR
(SHIPBUILDING & SHIPREPAIR)

**CSR & SUSTAINABILITY
EXCELLENCE AWARD**

Presented by:

YB DATUK SERI DR NORAINI BINTI AHMAD

Deputy Minister of Women, Family & Community Development

Dato' R. Rajendran
Chairman

Lee Seng Chee
Co-Chairman

18 July 2024, Kuala Lumpur

Organised by:

CSR Malaysia™

www.csrmalaysia.org

**WORLD
SUSTAINABILITY
COMMUNITY**

Pertubuhan Amal Tanggungjawab
Kemamanan Dan Korporat Malaysia

Supported by:



Ministry of Women, Family
& Community Development



National Record

This is to certify that

Lumut Naval Shipyard Sdn Bhd

is listed in the Flame of Extraordinary of

Jalur Gemilang Book of Records

for participating in setting the record for

"The Largest Spontaneous Patriotic Choir Performance"

by HR Professionals and Practitioners during the Malaysian Employment Laws Conference 2024 (MELC 2024), with a total of **150** delegates joining in the celebration of Merdeka Month.

Date: 13 August 2024

Venue: One World Hotel Petaling Jaya, Selangor

Witnessed by:

YB Senator Dato' Dr Nelson Renganathan
Ahli Dewan Negara [Senator]

Mr. Alvin Lai Yew Kar
Founder



Mr. Lau Kar Hoe
Chief Executive Officer



CERTIFICATE OF NATO COMMERCIAL AND GOVERNMENT ENTITY

Awarded To
LUMUT NAVAL SHIPYARD SDN BHD

(199001007732)

NCAGE Code

Y0189

Serial No: MAFCA/505/24/E
Valid Date: 30 JUNE 2027


.....
**DIRECTOR
NATIONAL CODIFICATION BUREAU
OF MALAYSIA**

MOHAMED ALI ABBAS (372040)
Kol TUDM
Pengarah
Penguasa Rukong Atm
Kementerian Pertahanan Malaysia

**DIRECTORATE GENERAL TECHNICAL SEAWORTHINESS
TENTERA LAUT DIRAJA MALAYSIA**



dengan ini memberi persijilan layak kepada

Lumut Naval Shipyard Sdn Bhd

Pangkalan TLDM
32100 Lumut
Perak

Sebagai

**Limbungan Berdaftar dengan KEMENTAH bagi Selenggaraan
Berjadual (Refit)/DED/Slipping serta Pembaikan Kerosakan
Kecemasan Bot dan Kapal TLDM**
(Audit Kelayakan Limbungan selaras dengan ketetapan di Pekeliling
Perbendaharaan Malaysia PK 2.1 Artikel 15)

iaitu bagi kategori

Kelas Limbungan AA

Dengan keputusan

Lulus Dengan Risiko Rendah

Ts. ROZAIDE BIN DIEGAT OTHMAN
Laksamana Pertama
Pengarah Kanan Kejuruteraan
Markas Tentera Laut



Tamat Tempoh Layak: 16 Januari 2028

Fail Rujukan: MTL(N4-2/1).100-7/7/9 - (55) bertarikh **17 Feb 25**



WELCOME TO THE **GREEN COMMUNITY**

We would like to thank you

LUMUT NAVAL SHIPYARD SDN BHD

**JLN TELOK MUROH
PENGKALAN TLDM
32200 LUMUT
PERAK
(Contract Account No: 220903804102)**

For subscribing to 154 Block(s) (154,000 kWh)
of electricity generated from renewable
energy sources
Commencement Date: 1st January 2025

Malaysia Renewable Energy Certificate will be issued on a yearly basis
within one month after the end of each calendar year



**TENAGA
NASIONAL**

Better. Brighter.

CERTIFICATE

OF ACHIEVEMENT

this certificate is proudly presented to

**LUMUT
NAVAL SHIPYARD**

**CUSTOMER TOWARDS GREEN
INITIATIVE THROUGH
GREEN ELECTRICITY TARIFF**

Ir. MOHD AZHAR BIN ABD RASHID

Head of State Retail (Perak)

Retail Division

Tenaga Nasional Berhad



75
1949 - 2024



This Redemption Statement has been produced for

LUMUT NAVAL SHIPYARD SDN BHD

by

TNBX SDN. BHD.

confirming the Redemption of

1 222.065000

I-REC Certificates, representing 1 222.065000 MWh of
electricity generated from renewable sources

This Statement relates to electricity consumption located at or in

**JLN TELOK MUROH PENGKALAN TLDM 32200 LUMUT PERAK
Malaysia**

in respect of the reporting period

2024-05-03 to 2024-12-31

The stated Redemption Purpose is

**To Claim the Purchased Electricity is from Renewable Electricity for Emissions Avoidance under
Scope 2 GHG Emissions Reporting**



QR Code Verification

Verify the status of this Redemption Statement by scanning the QR code on the left and entering in the
Verification Key below

Verification Key

4 6 4 5 3 7 6 0

<https://api-internal.evident.app/public/certificates/en/s%2BPdNqg4Jz21oNo6gzWzjvIG%2B1gE1qX7TBLzdJO2fi8LF65sluzncq9YsARu8hn9>



**WE ARE PART OF THE
COALITION OF DEFENCE INDUSTRY**

